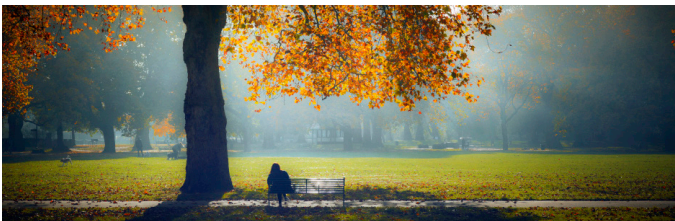


Ham Close

Newsletter October 2019

Welcome to the latest Ham Close Newsletter

Though the summer now feels like a distant memory, we hope that you had an enjoyable one and that you're now settling into the autumn season. Here is the latest news in relation to the Ham Close regeneration project.



Estate Services

Working with the Ham Close Residents Association, RHP's Estate Services team will be at Ham Close on 15 October from around 9am to repair and re-plant the damaged raised bed and to re-plant some of the borders around the blocks. This will ensure the area is looking great as the Autumn draws in. Do say hello if you are passing or even lend a hand!

Preparation for the winter months

During the winter months, it's more likely that you'll notice condensation in your home. Some homes will be affected by condensation, which can lead to black mould over time. Condensation is usually found in the corners of rooms, on north-facing walls and around windows. It is also found in areas with very little air circulation such as behind wardrobes and beds – especially if they are pushed up against external walls. The amount of condensation is affected by three factors:

- ▶ How much water vapour is produced.
- ▶ How cold or warm your home is.
- ▶ How much ventilation there is in your home.

If you still have problems with damp in your home, please contact us and we can talk about other ways to help.



New Regeneration Manager

Interviews have been held for a new Regeneration Manager to lead RHP into the next exciting phase of this project and we are pleased to have appointed someone with great regeneration experience. They will be an RHP employee (as opposed to a consultant) and once we have agreed their start date we will arrange an opportunity to introduce them.



Customer Champions

We are looking for Customer Champions from Ham Close who would be interested in meeting with RHP regularly to be involved in the Regeneration Project. This would be an opportunity to get project updates, give RHP feedback, and to relay information to your neighbours and Residents Association. If you are interested, please contact RHP.

Ham Close

Newsletter October 2019



Richmond Council Update

Following discussions this month with the Department for Education, the Council's section 77 application for the disposal of a section of St Richard's playing fields is being reviewed with the hope that it will be taken to Playing Fields committee in November with a decision shortly after this. The Council has also been in contact with the CCG and Hounslow and Richmond Community Healthcare Trust (HRCH) about visiting the stakeholder group to discuss the wider plans for healthcare provision in the area. Whilst no commitments have been made, we are currently identifying how such a session might be run, and the Council have been clear that an explanation of how the health care providers will cope with any impact from the development must be given.

During the summer months the Council held two engagement sessions at the Ham Youth Centre with the youth club and TAG to discuss the design of the new community facilities on the estate. Both groups were pleased to be involved in the design process and gave extremely useful feedback which will be built into the developing specification.

Frequently Asked Questions

We will be re-issuing our Frequently Asked Questions (FAQ's) shortly to provide you with reminders and updates of issues that may have concerned you. This will be an opportunity to re-cap on where we are and what happens next. You can find all previous documents about the Regeneration project, including the Customer Offer at www.hamclose.co.uk.

We'll also be working with the Council to revamp the website, to give you more information which is easier to find. If there is anything in particular you would like to see on the website, please get in touch.



Contact us

If you would like to contact RHP you can log on to www.rhp.org.uk and web chat with us, email customer.services@rhp.org.uk or telephone freephone **0800 032 2433** or from a mobile on **020 3166 2200**.

