

TWICKENHAM FILM STUDIOS



Home For Filmmakers

CONTENTS

PRODUCTION

1. STAGE 1
2. STAGE 2
3. STAGE 3

SOUND POST PRODUCTION

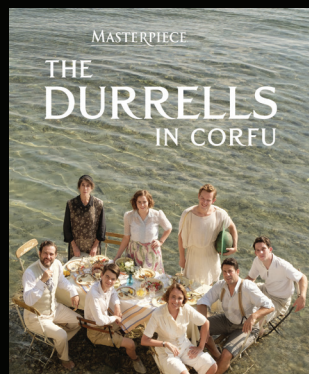
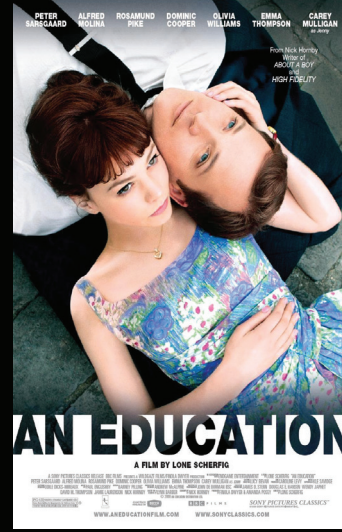
4. THEATRE 1
5. THEATRE 2
6. THEATRE 3, THEATRE 4 AND SERVICES

PICTURE POST PRODUCTION

7. GRADING THEATRE AND PICTURE SERVICES

OUR FACILITY

8. LOCAL AMENITIES
9. HERITAGE
10. GETTING IN TOUCH



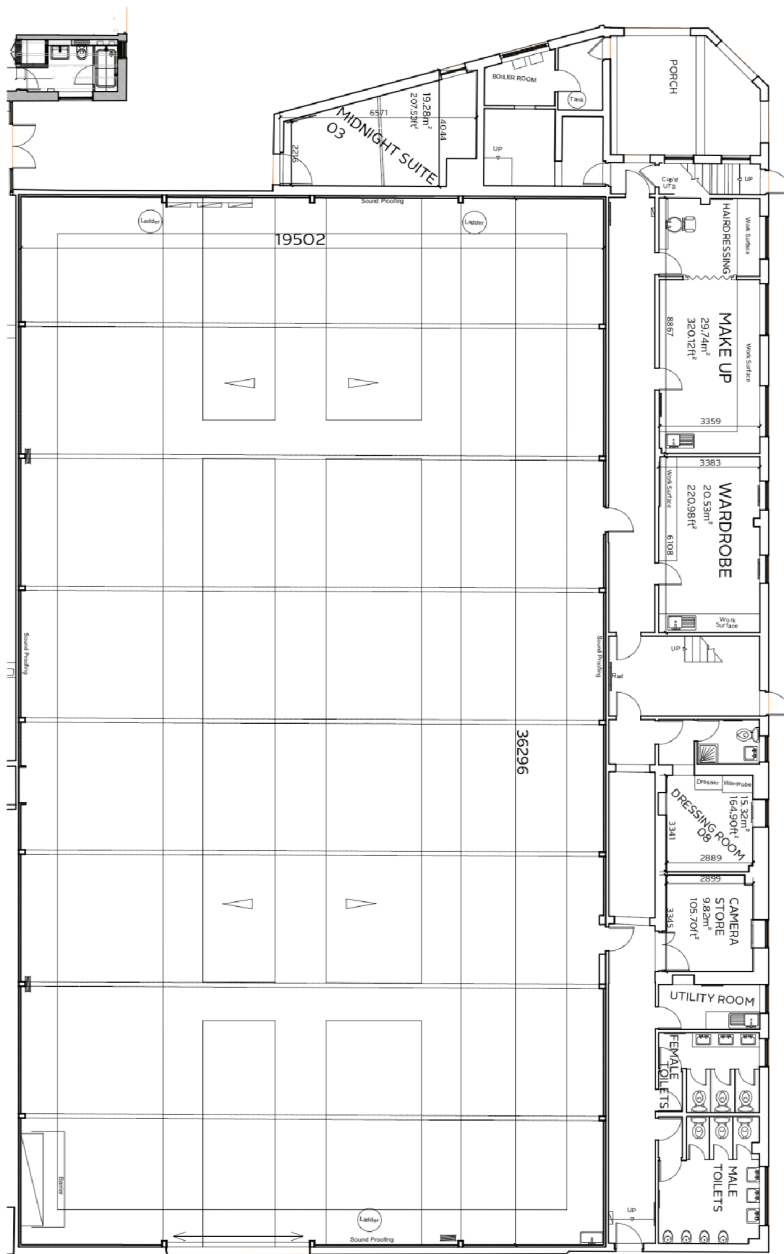
PRODUCTION

EST. TFS 1913 EST. 1913

STAGE 1

FULL SPECIFICATIONS:

- Sound proof
- Area: 7,627.48 sq ft (708.61 sq m)
- 118 ft x 64 ft x 34 ft (35.9 m x 19.5 m x 10.5 m)
- Height to gantry: 18 ft (5.5 m)
- Height to runners: 34 ft (10.4 m)
- Lightning grid: chains and tackles (16 units)
- Timber floor
- Dock door: 14 ft 6 in x 9 ft 6 in (4.42 m x 2.92 m)
- Subterranean water tank
- 30 x 125 amp single phase ceeform socket outlets
- 1 x 32 amp, 1 x 63 three-phase socket outlets
- 2 x .2 BAC three-phase, neutral and earth circuits at 400 amps per phase per circuit
- Total 800 amps per phase
- Multiple station hair and makeup, wardrobe and en-suite dressing rooms available (additional)





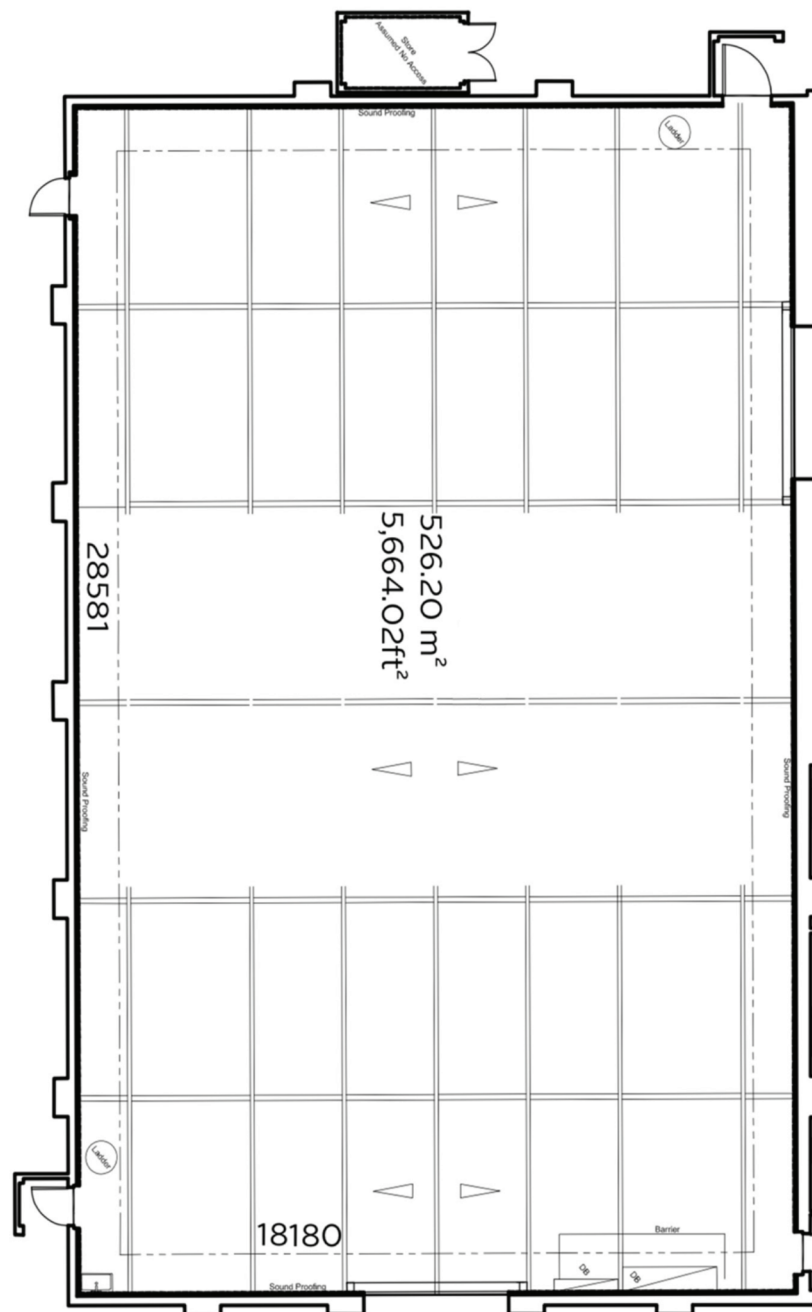
STAGE 2

FULL SPECIFICATIONS:

- Sound proof
- Area: 2,109 sq ft (196.02 sq m)
- 50 ft x 40 ft x 23 ft (15.2 m x 12.2 m x 7 m)
- Height to gantry: 16 ft (4.9 m)
- Height to runners: 23 ft (7 m)
- Lightning grid: chains and tackles (4 units)
- Timber floor
- Dock door: 11 ft 15 in x 11 ft 10 in (3.6 m x 3.48 m)
- Rising door between Studio 2 and Studio 3: 15 ft x 12 ft (4.57 m x 3.65 m) making an area of 7,530 sq ft
- 3 x 125 amp single phase ceeform socket outlet
- 3 x 63 amp single phase ceeform socket outlets
- Multiple station hair and makeup, wardrobe and en-suite dressing rooms available

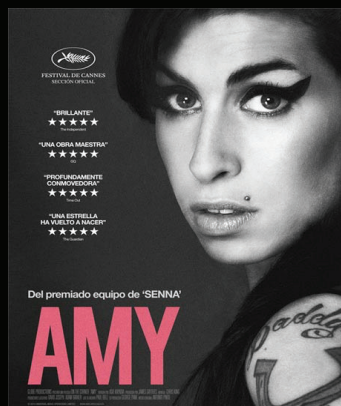
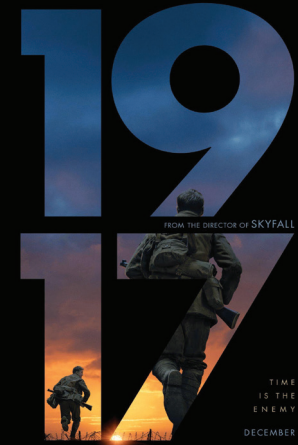
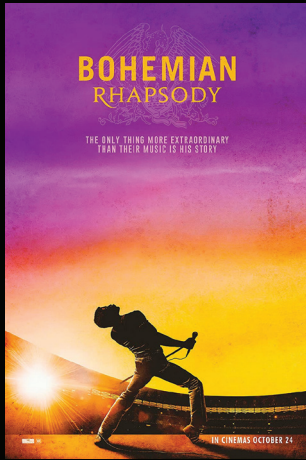


STAGE 3



FULL SPECIFICATIONS:

- Sound proof
- Area: 5,664 sq ft (526.20 sq m)
- 93 ft x 60 ft x 24 ft (28.3 m x 18.3 m x 7.3 m)
- Height to gantry: 16 ft (4.9 m)
- Height to runners: 23 ft (7 m)
- Lightning grid: chains and tackles (13 units)
- Timber floor
- Dock door: 11 ft 15 in x 11 ft 10 in (3.6 m x 3.48 m)
- Rising door between Studio 2 and Studio 3: 15 ft x 12 ft (4.57 m x 3.65 m) making an area of 7,530 sq ft
- 18 x 125 amp single phase ceeform socket outlets
- 1 x 16, 1 x 32, 1 x 63 three-phase socket outlets
- 2 x .2 BAC three-phase, neutral and earth circuits at 400 amps per phase
- Total 800 amps per phase
- Multiple station hair and makeup, wardrobe and en-suite dressing rooms available



SOUND POST

EST. 1913

T F S

EST. 1913



THEATRE 1

FULL SPECIFICATIONS:

- 17m x 10m x 5.5m room dimensions
- 8.2m x 3.5m screen dimensions
- Can accommodate 6 operators and 12 clients (flexible)
- Dolby Atmos, 7.1 and 5.1
- Modular dual engine hybrid AMS Neve DFC 3D / Avid S6 mixing console with AMS Neve DawSync
- HDX Avid Pro Tools
- Christie 4K Projection
- JBL Monitoring with XTA speaker management
- DDP Storage
- KVM Adderlink Infinity
- IMS 2000 DCP Playback
- Dante Monitoring Headphones
- Ancillary kitchen and hospitality area





THEATRE 2



FULL SPECIFICATIONS:

- 15m x 9.2m x 5.5m room dimensions
- 7.5m x 3.5m screen dimensions
- Can accommodate 6 operators and 12 clients (flexible)
- IMAX12, IMAX5, Dolby Atmos, 7.1 and 5.1
- Modular dual engine hybrid AMS Neve DFC 3D / Avid S6 mixing console with AMS Neve DawSync
- HDX Avid Pro Tools
- Christie 4K Projection
- JBL Monitoring with BSS Speaker Management
- DDP Storage
- Site integrated Adderlink KVM Infinity
- IMS3000 DCP Playback
- Dante Headphone Monitoring
- Large ancillary kitchen and hospitality area



THEATRE 3: Foley Theatre

FULL SPECIFICATIONS:

- 10.2m x 6.3 room dimensions
- 5m x 2.1 m screen dimensions (2.39:1 aspect ratio)
- Can accommodate 2 operators and 6 artists
- AMS-Neve PS1 Digital Console
- HDX Avid Pro Tools
- Christie HD Projection and Samsung 42" TV
- JBL 7.1 with XTA speaker management
- DynAudio monitoring with BSS speaker management
- Multiple headphone foldbacks
- DDP Storage
- Site integrated Adderlink KVM Infinity system
- Mic Pres: Neve, Grace, Focusrite
- Large selection of industry favoured mics
- Varied surface flooring and 'throw down' area
- Inclusive runner service on request

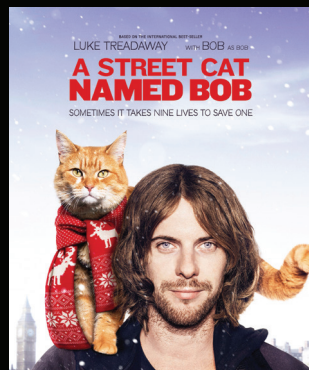
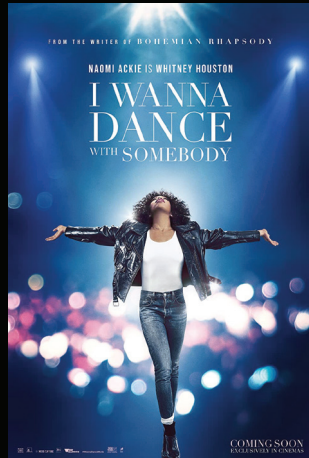
THEATRE 4

FULL SPECIFICATIONS:

- 7m x 5m x 2.5m room dimensions
- 2.3m x 1.27m x 2.57m screen dimensions
- Can accommodate 2 operators and 4 clients
- Dolby Atmos, 7.1 and 5.1
- Avid S6 Console
- HDX Avid Pro Tools
- Sony HD Projection
- DynAudio monitoring with BSS speaker management
- DDP Storage
- Site integrated Adderlink KVM Infinity system
- Dante Headphone Monitoring
- Inclusive runner service on request

SERVICES

- Sound Editorial
- Foley
- ADR and Crowd Recording
- Re-recording Mixing



PICTURE POST
EST. 1913
T F S

GRADING THEATRE

FULL SPECIFICATIONS:

- 7.8m x 4.8m x 3.3m room dimensions
- 4.5m x 2.3m screen dimensions
- Can accommodate 2 operators and 6 clients
- Dolby 7.1, 5.1
- Baselight/Resolve/Media composer/Pro Tools playback via SDI router
- Christie 4k Projection , with Dolby IMS2000 DCP Playback
- JBL monitoring with BSS speaker management
- Pixit storage
- Site integrated Adderlink KVM Infinity system
- Clearview and Streambox connectivity
- Inclusive runner service on request

PICTURE SERVICES

- Grading Theatre and Suite
- Grading
- VFX and Grade Reviews
- Online Editing
- Onsite and Offsite Dailies
- Streambox and Clearview Flex
- QC/Deliverables/Mastering
- Davinci Resolve/Flame/Baselight/Avid Media



Nestled in leafy St Margaret's, Twickenham Film Studios is surrounded by cozy, independent coffee shops, boutique stores and green open spaces. Yet despite our winsome location, we boast world-class facilities across all areas of site and are just 23 minutes from central London.

What more could you want?



OUR FACILITY

LOCAL AMENITIES

- Pubs, Cafes, Restaurants and Bars
- Richmond High Street
- West Middlesex Hospital
- Health and Fitness Facilities

TRAVEL

- St Margaret's Station (2 min walk)
- Richmond Station (20 min walk) (23 mins to central London)
- Heathrow Airport (25 minute drive)

ACCOMODATION

- The Petersham Hotel ****
- London Marriott Hotel Twickenham ****
- Travelodge Twickenham ***
- Richmond Hill Hotel ****

ONSITE EXTRAS

- Rooftop Cafe/Bar 'The Terrace'
- Prop, Art, Costume, Hair and Makeup Rooms
- Star Apartments
- Screening Room



HERITAGE

1913

In 1913, the charming but self-effacing Dr Ralph Jupp sets up St Margarets Studios (now Twickenham Film Studios) on the site of a former roller-skating rink. At this time, the Studios is the largest in the UK.

1918

Alma Lucy Reville, (wife of Alfred Hitchcock) works at the studios. First as a tea girl, before joining the editorial department.

1929

In 1929, Julius Hagen purchases the Studios and renames it Twickenham Film Studios. During his time at Twickenham, he becomes one of the most well-known and respected producers of 'quota quickies'.

1934/5

In 1934, the second stage is added (our current Stage 1). The Stage remains almost entirely the same today. On 29th October 1935, the original Stage 1 is destroyed entirely by a fire. The fire destroys the film archives, as well as fifteen years' worth of production photography. The cause of the blaze is still unknown...

1941

Stage 1 is requisitioned in 1941 by the British Government to build parts for aircraft used in WW2. It is de-requisitioned in 1946 when Alfred Shipman acquires the Studios. His two sons, Gerald and Kenneth take over when Alfred dies, leading the designs for the redevelopment of the studios.

1959

Post-production starts for the first time at the studios in 1959. In 1961, a brand-new modern recording theatre is opened, headed up by highly respected sound recordist, Stephen Dalby.

1960's

The 60's is a decade of prosperity for the studios. It manages to establish itself as a dynamic and modern facility. It is across this decade that 'The Beatles' spend a significant amount of time on site. Indeed, between the years of 1964 and 1969, the beloved English rock group use TFS more than any other single film facility: utilising our post-production facilities and occupying all three stages.

1970/80's

These two decades are also successful for the studios. So much so, that the TFS team expand further. Novello lodge (named after Ivor Novello who worked at Twickenham in the 20's) is built in 1973 to store sheet music and support music for screen. Richmond Lodge is built in 1975 and in 1980, the Sound Centre is proudly opened.

"An equal and unique blend of heritage and cutting-edge technology, the studios is a tangible example of old glamour and modern innovation..."



THE BARONS, TWICKENHAM, TW1 2AW, UK
 TEL: +44 (0)20 8607 8888
 WWW.TWICKENHAMSTUDIOS.COM

MAIN ENTRANCE:
 Twickenham Film Studios (Gate 2) The Barons, TW1 2AW

REAR ENTRANCE:
 Twickenham Film Studios (Gate 6) Arlington Road, TW1 2AY

SALES:
sales@twickenhamstudios.com | 020 8607 8888

STUDIO RECEPTION:
help@twickenhamstudios.com | 020 8607 8888

GENERAL ENQUIRIES:
info@twickenhamstudios.com

GETTING IN TOUCH

