

# Developed Masterplan


## Movement Diagram


+ Vehicles and pedestrians separated during normal school day. Only vehicles for servicing or emergencies have access to the centre of the campus.

AP Accessible Parking (blue badge)

SP Staff Parking


CP/CUP Coach parking/ Community Use Parking (Also to be used as hard Landscaping social area during school day)


 Car Route - for drop-off and pick up

 Servicing & Emergency Route

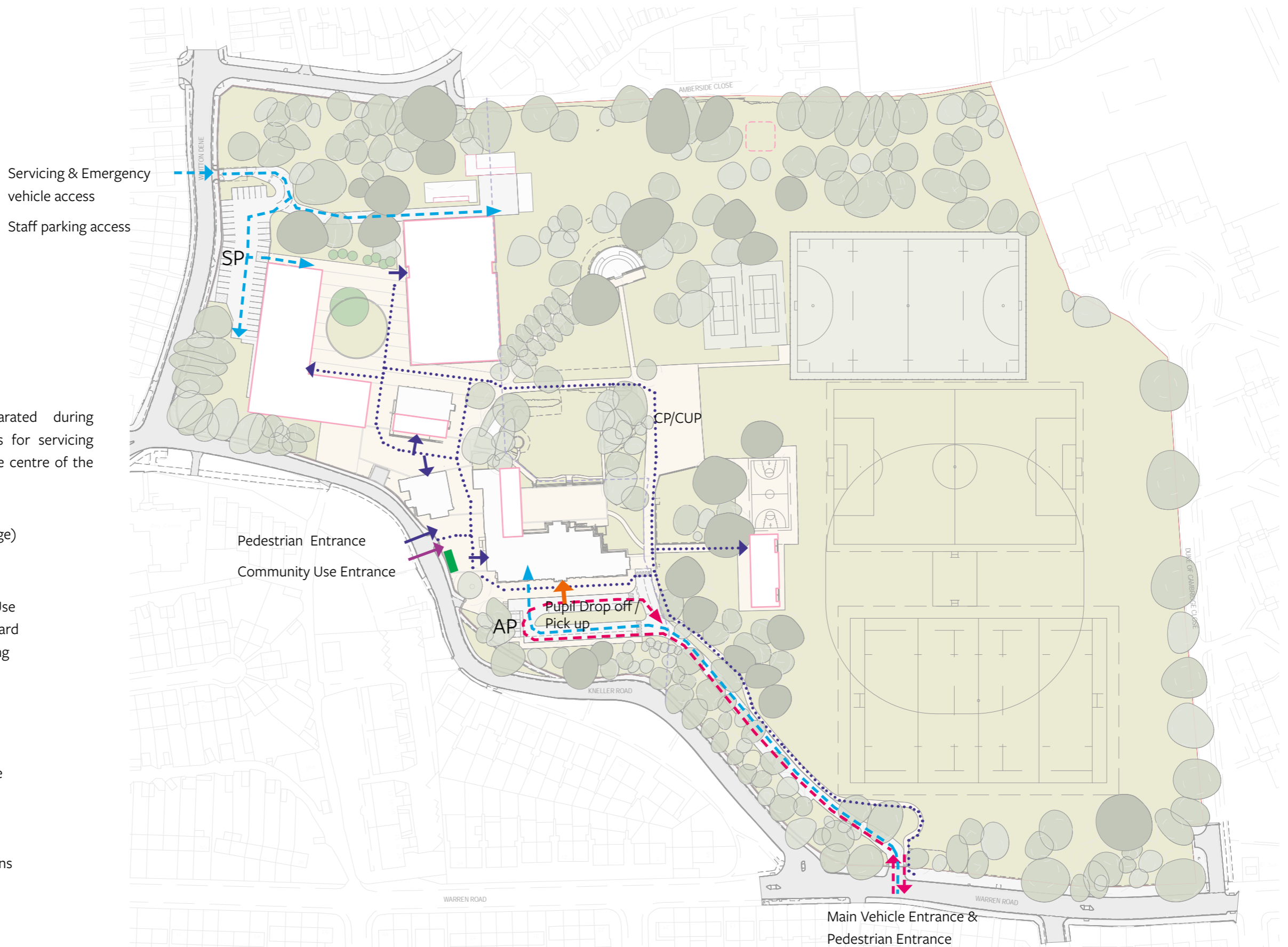
 Pedestrian Routes

 Building Entrances

 Entrance for Special Occasions

 Community Use Entrance

 Cycle Parking



Main Vehicle Entrance & Pedestrian Entrance

# Masterplan

## Building Heights & Indicative GIA

### Key

1S - 1 Storey

Pink numbers - proposed

Block numbers - existing






### STOREYS & GROSS INTERNAL AREAS

	NUMBER OF STOREYS	INDICATIVE BUILDING HEIGHT	INDICATIVE NEW BUILD GIA	INDICATIVE TOTAL GIA
1 Kneller Hall	4	14m	248m <sup>2</sup>	3907m <sup>2</sup>
2 Guards House	2	10.9m	0	416m <sup>2</sup>
3 School Hall	1	8.8m	169m <sup>2</sup>	376m <sup>2</sup>
4 Teaching Block	3	12.7m	5011m <sup>2</sup>	5011m <sup>2</sup>
5 Sports Centre	2	10.5m	2780m <sup>2</sup>	2780m <sup>2</sup>
6 Sports Pavilion	1	3.5m	309m <sup>2</sup>	309m <sup>2</sup>
7 Energy Centre	1	4m	106m <sup>2</sup>	237 m <sup>2</sup>
<b>TOTAL</b>			8,623m <sup>2</sup>	13037m <sup>2</sup>



## Developed Masterplan

### Overlay of New and Existing Buildings

-  Existing buildings
-  Buildings to be demolished
-  Proposed buildings/Extensions
-  Tree/ Hedges to be removed
-  MOL boundary



### STOREYS & GROSS INTERNAL AREAS

	Existing Footprint	Proposed Footprint	Demolished Footprint	Existing GEA	Proposed GEA	Demolished GEA
Whole site	5331	6492	3085	10833	14523	5385
In MOL	1138	521	978	1138	521	978