

Twickenham Riverside Development Engagement – Children and Young People

1. Introduction

Richmond Council held a period of consultation on the latest plans for Twickenham Riverside between 6th January and 3rd February 2021. The purpose of this consultation was to seek feedback on the designs before the submission of a planning application later in the year.

Alongside the main engagement, which was predominately aimed at adults, and in line with the Council's corporate priorities to increase engagement amongst less heard groups, the Council specifically targeted children and young people. This engagement, given the restrictions of the COVID-19 pandemic, was delivered through online events or through pre-recorded presentations and a simplified questionnaire. The purpose of this was to gather feedback from children and young people about the concept designs.

This report sets out the key findings from the engagement with children and young people. The results will help inform design development before the submission of a planning application.

2. Methodology

The Council contacted all primary and secondary schools within the local area and for those interested offered either to run a session online with students or to provide a pre-recorded presentation and simplified questionnaire that could be delivered by the school themselves. The Council gathered the views of around 310 children and young people across the two methods.

Online sessions – in the online sessions Council officers gave young people a presentation on the designs, stopping for questions as required, before seeking comments on the designs. Teachers present in these sessions helped facilitate the open comment section. Council officers wrote notes during the session to capture key comments made.

Pre-recorded presentation – schools which chose this method were provided with a presentation with pre-recorded audio for each slide, they were also provided with a simplified questionnaire for the young people to fill out after watching the presentation.

The responses to both have been analysed by the Council's Programme Team, who organised this engagement and delivered the sessions.

3. Responses

In total the Council engaged with around 310 children and young people. Approximately 142 of which were via responses to the questionnaire and approximately 168 were via the live online sessions.

Respondents were aged between 9 and 18.

4. Results

4.1 Feedback from the questionnaire

The Council received questionnaire responses from two schools. The questionnaire contained three questions:

- Please tell us what you LIKE about the new design
- Please tell us what you DISLIKE about the new design
- Please tell us what else you would like to see included in the new site, thinking about things for people your age

4.2 Question 1 – Please tell us what you LIKE about the new design

This was an open question that allowed respondents to describe what they liked about the new design. In total around 306 comments were given. The below shows the key themes identified from the responses.

What they liked	Number of comments that mentioned this theme	Percentage of comments for this question
Events / Events area / Activities (this includes comments on the outdoor cinema, market)	51	17%
<i>Outdoor cinema (incl. in above)</i>	15	
<i>Market (incl. in above)</i>	12	
Design / Buildings / Looks good / Modern / Modern design	32	10%
More open space / Improvements to open space / Open feel / Gardens	31	10%
Green area / Greenery / Grass / Plants	19	6%
Getting rid of cars / Less parking	17	6%
Shops	16	5%
Children's play area	11	4%

4.3 Question 2 – Please tell us what you DISLIKE about the new design

This was an open question that allowed respondents to describe what they disliked about the new design. In total around 172 comments were given. The below shows the key themes identified from the responses.

What they disliked	Number of comments that mentioned this theme	Percentage of comments for this question
Don't dislike anything / Nothing	31	18%
Less parking / Need to keep some parking	13	8%
Design / Buildings	8	5%
No response given	8	5%
Keep Gardens in current location	5	3%
Not enough green space	5	3%

4.4 Question 3 – Please tell us what else you would like to see included in the new site, thinking about things for people your age

This was an open question that allowed respondents to describe what else they wanted to see included in the design. In total around 224 comments were given. The below shows the key themes identified from the responses.

What else they would like to see in the new site	Number of comments that mentioned this theme	Percentage of comments for this question
Shop suggestions	29	13%
Sports facilities	21	9%
More food and drink places / Café / Restaurants	17	8%
More seating / seating / hangout/get together spaces	15	7%

Playground / children's play area (including 5 comments on equipment ideas)	15	7%
More greenery / More plants	12	5%
No response given	12	5%
More river-based activities / Boat rental / Boathouse	11	5%

4.5 Feedback from the online sessions

Nine online sessions were run, with four schools and one youth organisation, engaging with approximately 168 children and young people. The sessions were run by Council officers with the help of teachers and attended, where possible, by a Ward Councillor. In the online sessions Council officers presented images from the consultation boards and wrote down notes of questions and points raised. While the presentation was the same for each session, not all sessions ran in the same way nor were they the same length. The below represents common themes among all sessions. It is not possible to say how many children or young people from the sessions agreed with these comments given the online format, but the number of sessions in which the theme was raised is captured and it is mentioned if there was a noticeable consensus among the children and young people.

Theme	Number of sessions mentioned in
River based activities – seen a good addition to the scheme and would be used There was a strong consensus on this	7
Markets – seen as positive with some suggestions of types of stalls they would like to see	4
Playground – including play equipment ideas given and general consensus that younger and older children sections should be separate if possible	4
Events – comments on particular types of events which they would like to see	4
Open space / greenery – liked the open / green space, some comments on increasing grass area / amount of plants	3
Sustainability – seen as an important consideration	3
Sports facilities – separate to the river-based activities, comments including sports facilities such as football pitch/goals	3
Personal safety – mentioned predominately in groups run with secondary school aged children, they commented on the safety of the current site and how lighting / feeling of security in the evening is important in the new scheme	3

Appendix A – The questionnaire

Twickenham Riverside Redevelopment – Young People’s Questionnaire

When answering the below questions, you may want to think about the following:

- How the buildings look
- The outside space
- The children’s play area and the type of play equipment
- How the buildings will be used
- The activities on the site (on the Embankment event space)
- How you might use the space
- River based activities
- What the site provides for young people
- What is missing / what else you would like to see
- How you might get to and from the site (e.g. walking, cycling or by car or bus)

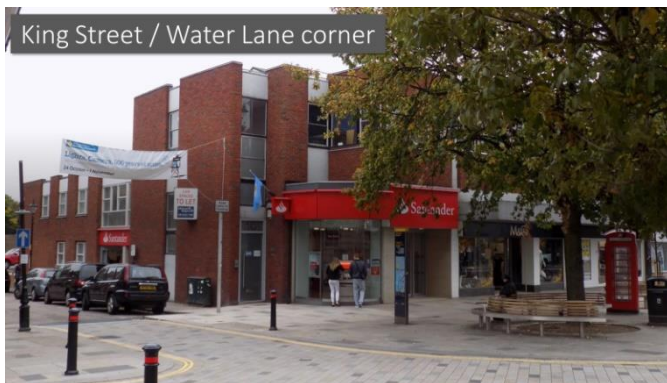
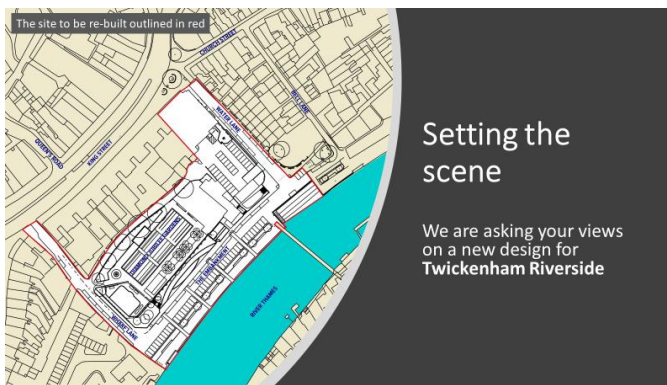
1. Please tell us what you LIKE about the new design (please use bullet points):

2. Please tell us what you DISLIKE about the new design (please use bullet points):

3. Please tell us what else you would like to see included in the new site, thinking about things for people your age (please use bullet points):

Appendix B – Presentation

The presentation given in online sessions.



The Embankment (between
Water Lane and Wharf Lane)



The Diamond Jubilee Gardens
(which will be replaced)



THE NEW DESIGN

The new site plan



New view from King Street



New view from Eel Pie Island bridge



View of the Embankment



New view of the Gardens from the bottom of Water Lane



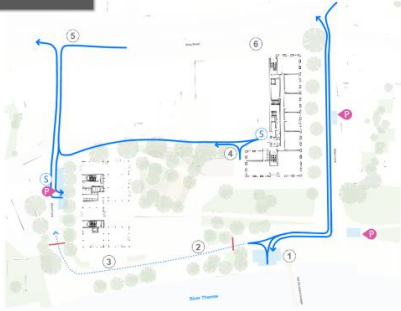
Looking across Diamond Jubilee Gardens



New activity spaces on the Embankment



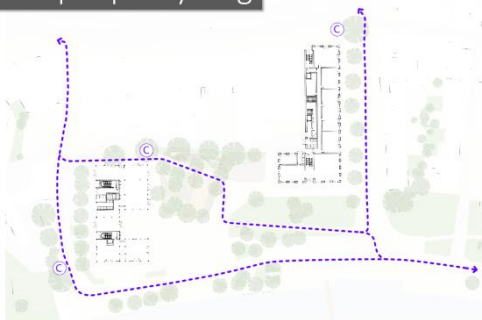
Routes for cars



Routes people can walk



Routes for people cycling



New aerial view

