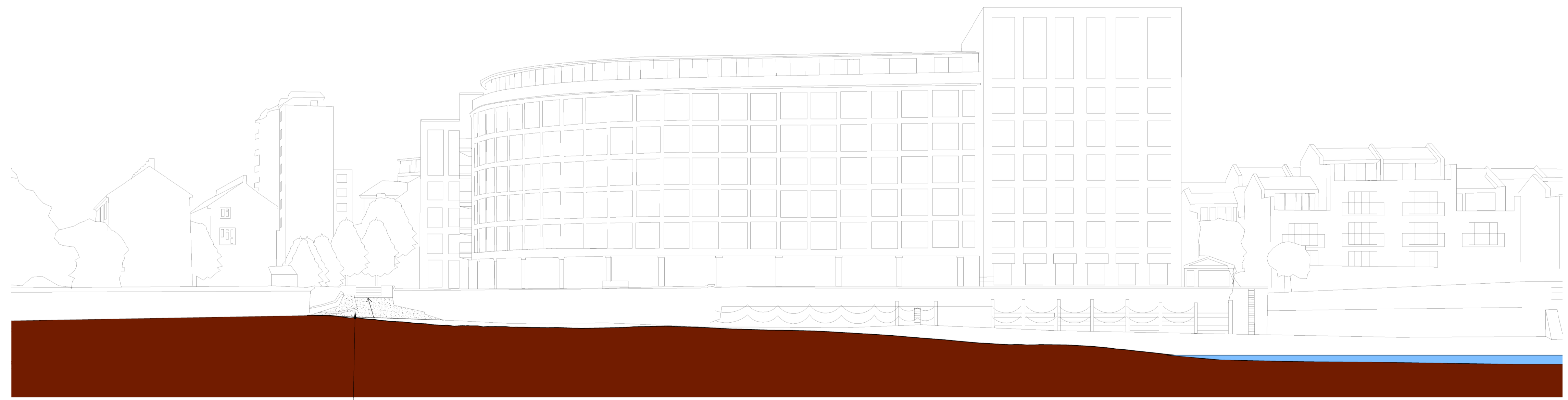
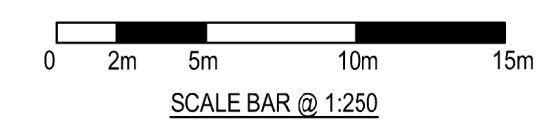


EXISTING ELEVATION - MHWS
(SCALE 1:250)



EXISTING ELEVATION - MLWS
(SCALE 1:250)

EXISTING CONCRETE
SLIPWAY



- NOTES :
- DIMENSIONS ARE NOT TO BE SCALED FROM THIS DRAWING. ALL DIMENSIONS ARE IN MILLIMETRES UNLESS OTHERWISE INDICATED.
 - ALL COORDINATES ARE IN METRES TO THE OSGB36 GRID SYSTEM.
 - OFFICIAL ISSUES OF THIS DRAWING ARE IN PAPER OR PDF FORMAT ONLY. DWG FORMAT FILES ARE FOR REFERENCE ONLY.
 - THE DESIGN PRESENTED IS CONCEPT LEVEL, FOR DISCUSSION ONLY AND SUBJECT TO CHANGE.
 - TIDE LEVELS

HAT	+4.72mOD = +6.40mCD
MHWS	+4.12mOD = +5.80mCD
MHWN	+3.02mOD = +4.70mCD
MLWN	-0.98mOD = +0.70mCD
MLWS	-1.38mOD = +0.30mCD
LAT	-1.68mOD = 0.00mCD
 - TIDE LEVELS IN CHART DATUM WHICH IS 1.68m BELOW ORDNANCE DATUM.
 - THE FOLLOWING MATERIALS CAN BE ASSUMED THROUGHOUT. WHERE A COLOUR IS NOT PROVIDED, TYPICAL UNCOATED MATERIAL COLOUR MAY BE ASSUMED.

- PONTOONS
- STRUCTURE: PAINTED BLACK STEEL U.N.O
 - PONTOON DECK: GREY RESIN BOUND SURFACE
 - HANDRAILS: GALVANISED STEEL
 - SHELTER: GREY COATED STEEL WITH PERFORATED BLACK STEEL PANNELLING AND GLASS ROOF
 - PILES AND GUIDES: UNTREATED STEEL
 - SAFETY LADDERS AND CHAINS: GALVANISED STEEL
 - MODRING BOLLARDS: PAINTED YELLOW STEEL
 - GANGWAYS: ALUMINIUM

- FLOATING WALKWAY
- HANDRAILS: GALVANISED STEEL
 - GANGWAYS: ALUMINIUM
 - PONTOONS: BUFF POLYETHYLENE
 - PILES AND GUIDES: UNTREATED STEEL
 - ANCHOR BLOCK: PRE-CAST CONCRETE

- RAISED WALKWAY / RAMPING
- HANDRAILS: GALVANISED STEEL
 - DECK: GREY RESIN BOUND SURFACE

REFERENCE DRAWINGS:

2048-BRL-02-XX-DR-C-3001	KEY PLAN
2048-BRL-02-XX-DR-C-3012	HAMMERSMITH PIER - LOCATION SITE PLAN
2048-BRL-02-XX-DR-C-3013	HAMMERSMITH PIER - PROPOSED BLOCK PLAN
2048-BRL-02-XX-DR-C-3101	HAMMERSMITH PIER - PROPOSED GA
2048-BRL-02-XX-DR-C-3102	HAMMERSMITH PIER - EXISTING ELEVATION
2048-BRL-02-XX-DR-C-3103	HAMMERSMITH PIER - PROPOSED ELEVATION
2048-BRL-02-XX-DR-C-3104	HAMMERSMITH PIER - EXISTING RIVER SECTION
2048-BRL-02-XX-DR-C-3105	HAMMERSMITH PIER - PROPOSED RIVER SECTION - MHWS
2048-BRL-02-XX-DR-C-3106	HAMMERSMITH PIER - PROPOSED RIVER SECTION - MLWS
2048-BRL-02-XX-DR-C-3107	HAMMERSMITH PIER - PROPOSED LANDSIDE SECTION
2048-BRL-02-XX-DR-C-3120	HAMMERSMITH PIER - PONTOON LAYOUT
2048-BRL-02-XX-DR-C-3131	HAMMERSMITH PIER - PROPOSED BED LEVELLING PLAN

© Beckett Rankine Ltd. All rights reserved.
This drawing, design and concept is confidential and may not be reproduced, manufactured or exploited in whole or part without written permission of Beckett Rankine Limited.



CLIENT
Uber Boat
by **thames clippers**

REV	DATE	DRN	DOCHK	ENGCN	APP	REVISION	DESCRIPTION
P02	17.05.21	MS	NS	TKHB	TKHB		ISSUED FOR APPROVAL
P01	14.05.21	MS	OM	HP	TKHB		ISSUED FOR APPROVAL



TITLE
HAMMERSMITH TEMPORARY FERRY
HAMMERSMITH PIER
EXISTING ELEVATION

PROJECT DRAWING No.	SCALE	S. CODE	REV
2048-BRL-02-XX-DR-C-3102	1:250	S4	P02