

APPENDIX 2: AQMAS AND FOCUS AREAS

In Richmond an Air Quality Management Area (AQMA) has been declared for the whole borough.

The AQMA has been declared for the following pollutant/s:

- Nitrogen Dioxide (NO₂) - we are failing to meet the EU annual average limit for this pollutant at some of our monitoring stations and modelling indicates it is being breached at a number of other locations. We may also be breaching the UK 1-hour AQ Objective based on measured concentration for NO₂ being in excess of 60µg/m³ at some locations within the borough.
- Particulate Matter (PM₁₀) – whilst monitoring data from the automatic monitoring stations at Castelnau Library (Roadside site), and Wetlands Centre (Background site) in Barnes indicate we are complying with the UK Objectives and EU Limits, the wider modelling data indicates that we are likely to be breaching the 24-hour and annual mean PM₁₀ Objectives at a number of locations across the borough. We are also exceeding World Health Organisation air quality guideline for this pollutant, and we have a formal responsibility to work towards reductions of PM_{2.5}.

An air quality Focus Area is a location that has been identified as having high levels of pollution and human exposure. There are four focus areas in the borough. These are on the main transport links along Hammersmith Bridge Road at Castelnau; the road between Richmond Circus and Richmond Bridge up to Sheen Road; Chalkers Corner, King Street, Twickenham.

Figure 4: London Borough of Richmond upon Thames GLA Focus Areas (2013)

Focus Area Ref.	Location
Focus Area 159	Hammersmith Bridge Road at Castelnau
Focus Area 160	Richmond Circus to Richmond Bridge and Sheen Road A305
Focus Area 161	Richmond – Chalker’s Corner/ Clifford Avenue/A205/Upper Richmond Road/Millstone Green.
Focus Area 162	Twickenham – King Street

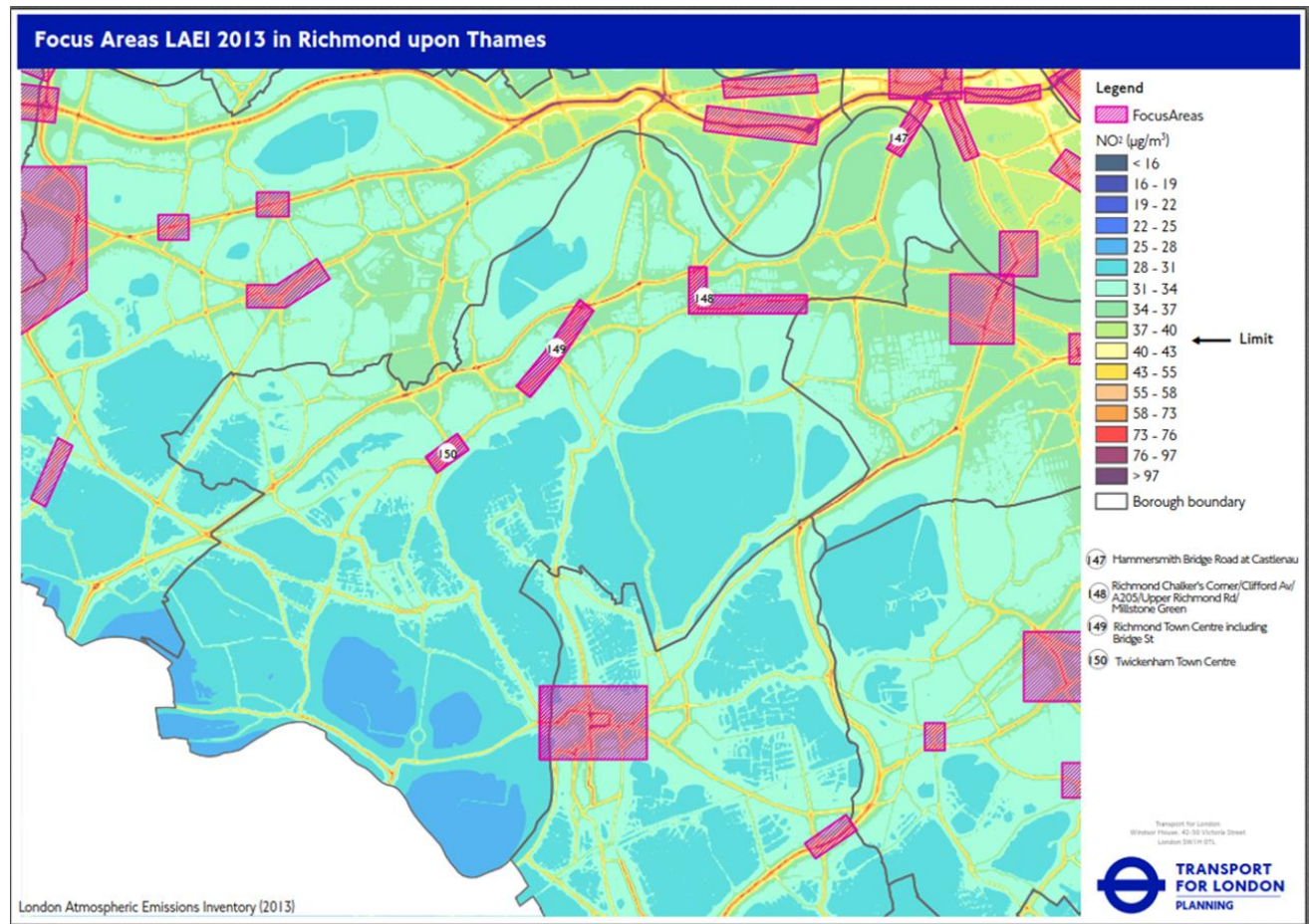


Figure 5: Map of London Borough of Richmond upon Thames - Air Quality Focus Areas (GLA 2013)