

*13 References & Appendix*



# 13 References & Appendix

## 13 REFERENCES

### London Borough of Richmond documents

Unitary Development Plan 2005

Civic Pride Programme

Community Plan

Service Plan

Street Scene Best Value Review

Tree Strategy 1999

Walking Strategy 2002

Open Spaces Strategy 2003

Local Transport Strategy 2004

Community Safety Strategy 2005-2008

Conservation Area Studies

Conservation Area Statements

Design for Maximum Access 1992

Street Design Guide 1995

Supplementary Planning and Design Guidance various

Twickenham Street Scene Review 2004

Waste Collection and Cleansing Services

Identity Guidelines 2004

Design Quality 2006

### Related documents

Thames Landscape Strategy (Hampton to Kew) 1994

Old Deer Park Landscape Strategy 1999

Thames Strategy (Kew to Chelsea) 2002

### Other references

Civic Trust: Traffic Measures in Historic Towns 1993

English Heritage: Streets for All 2000

English Partnerships and The Housing Corporation:  
Urban Design Compendium 2000

CABE: By Design 2000

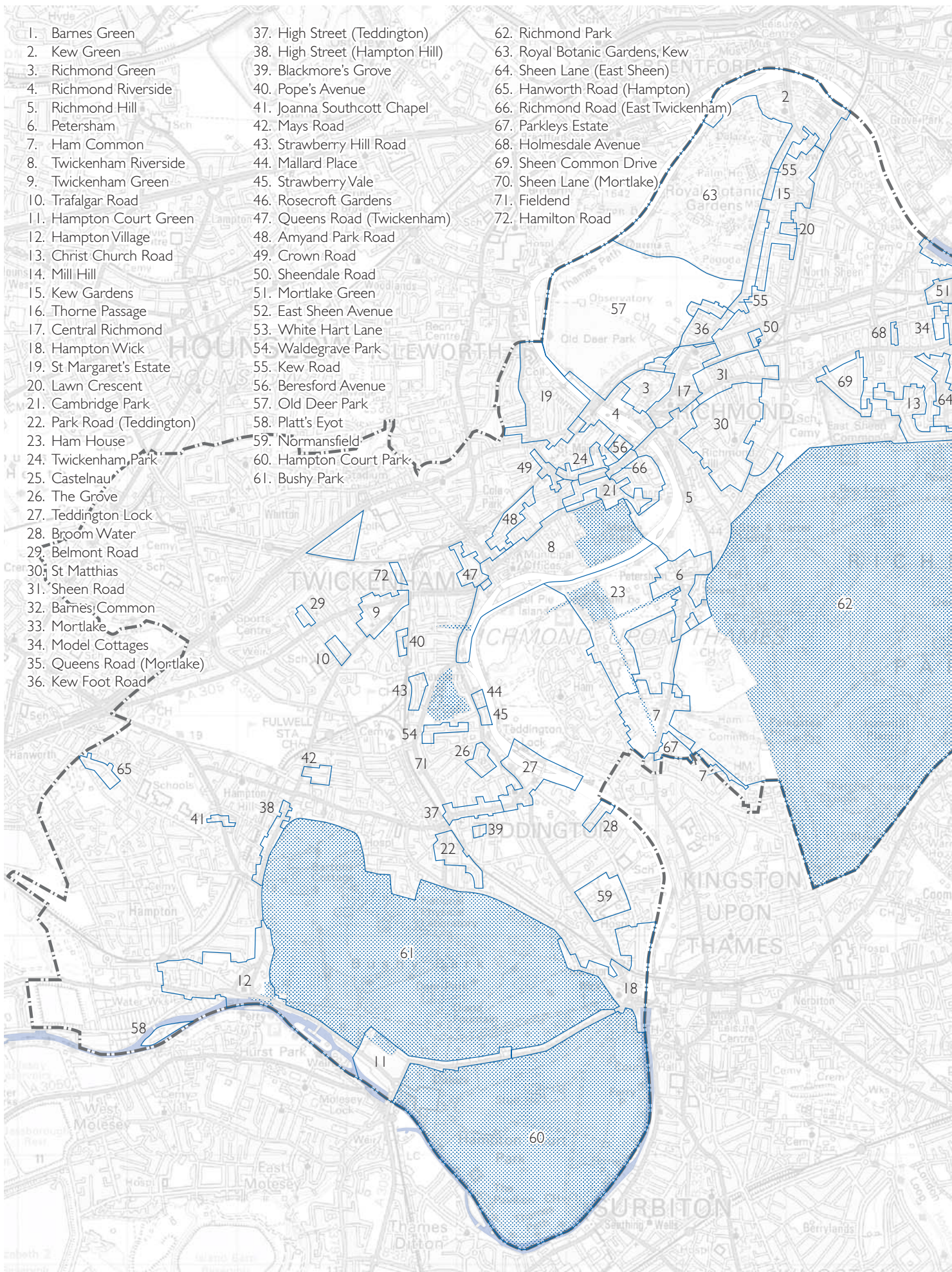
CABE: Paving the Way 2001

DTLR: Green Spaces Taskforce 2002

Gehl Architects: Towards a fine City for People 2004

TfL: Streetscape Guidelines 2005

More general national/regional guidance is given in Section 2

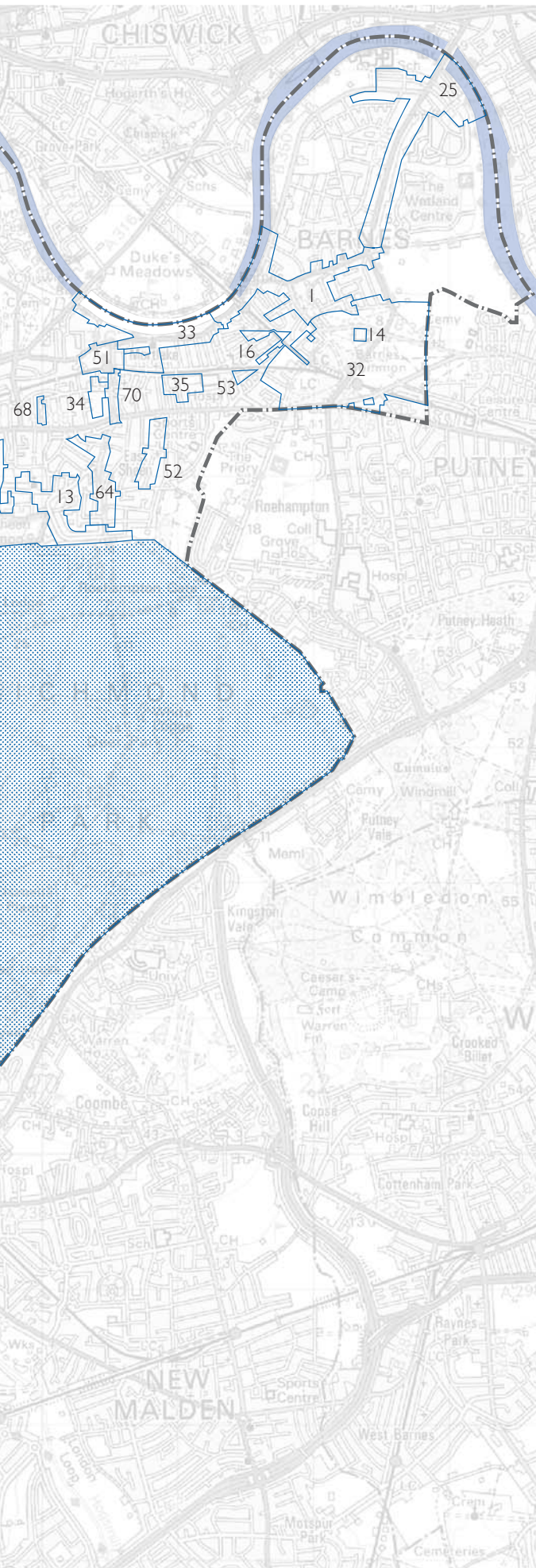


1. Barnes Green
2. Kew Green
3. Richmond Green
4. Richmond Riverside
5. Richmond Hill
6. Petersham
7. Ham Common
8. Twickenham Riverside
9. Twickenham Green
10. Trafalgar Road
11. Hampton Court Green
12. Hampton Village
13. Christ Church Road
14. Mill Hill
15. Kew Gardens
16. Thorne Passage
17. Central Richmond
18. Hampton Wick
19. St Margaret's Estate
20. Lawn Crescent
21. Cambridge Park
22. Park Road (Teddington)
23. Ham House
24. Twickenham Park
25. Castelnau
26. The Grove
27. Teddington Lock
28. Broom Water
29. Belmont Road
30. St Matthias
31. Sheen Road
32. Barnes Common
33. Mortlake
34. Model Cottages
35. Queens Road (Mortlake)
36. Kew Foot Road




37. High Street (Teddington)
38. High Street (Hampton Hill)
39. Blackmore's Grove
40. Pope's Avenue
41. Joanna Southcott Chapel
42. Mays Road
43. Strawberry Hill Road
44. Mallard Place
45. Strawberry Vale
46. Rosecroft Gardens
47. Queens Road (Twickenham)
48. Amyard Park Road
49. Crown Road
50. Sheendale Road
51. Mortlake Green
52. East Sheen Avenue
53. White Hart Lane
54. Waldegrave Park
55. Kew Road
56. Beresford Avenue
57. Old Deer Park
58. Platt's Eyot
59. Normansfield
60. Hampton Court Park
61. Bushy Park

62. Richmond Park
63. Royal Botanic Gardens, Kew
64. Sheen Lane (East Sheen)
65. Hanworth Road (Hampton)
66. Richmond Road (East Twickenham)
67. Parkleys Estate
68. Holmesdale Avenue
69. Sheen Common Drive
70. Sheen Lane (Mortlake)
71. Fieldend
72. Hamilton Road

# Appendix map 1

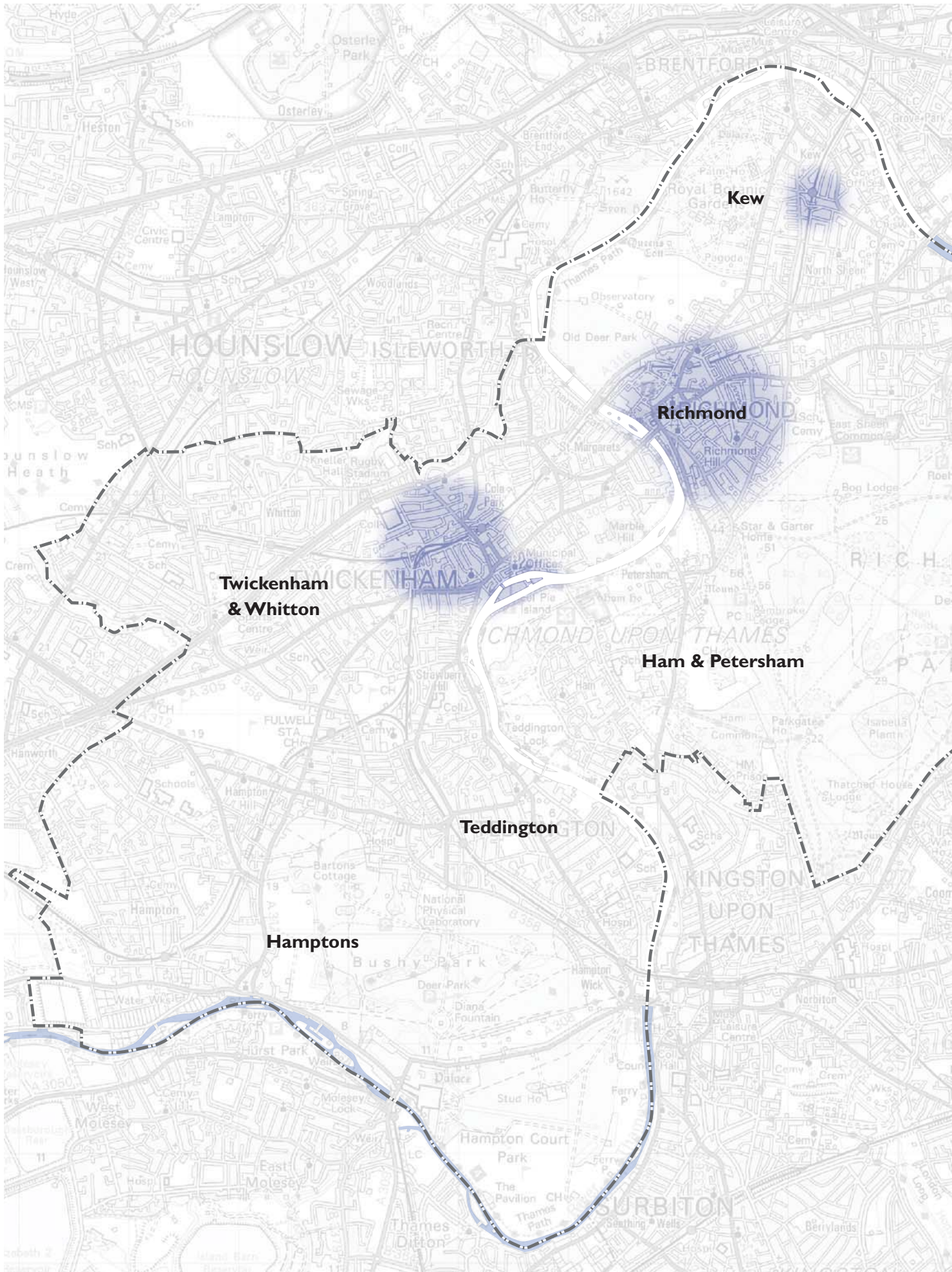


## CONSERVATION AREAS

-  Conservation areas (policies BLT 1, BLT 2)
-  Historic parks and gardens (English Heritage Register)
-  Borough boundary

Scale 1:40,000

Reproduced from Ordnance Survey material with permission of Her Majesty's Stationery Office. © Crown Copyright. Unauthorised reproduction infringes crown copyright and may lead to prosecution or civil proceedings. London Borough of Richmond Licence/account no. 1000019441 2004. For reference purposes only. No further copies may be made.



# Appendix map 2



## CHARACTER AREAS



Indicative areas for street furniture colours: see page 10



Borough boundary

Scale 1:40,000

Reproduced from Ordnance Survey material with permission of Her Majesty's Stationery Office. © Crown Copyright. Unauthorised reproduction infringes crown copyright and may lead to prosecution or civil proceedings. London Borough of Richmond Licence/account no. 1000019441 2004. For reference purposes only. No further copies may be made.

If you need this leaflet in Braille, large print, audio tape, or another language, please contact us on **020 8891 7322** or minicom **020 8831 6001**.

Civic Centre 44 York Street  
Twickenham TW1 3BZ

website: [www.richmond.gov.uk](http://www.richmond.gov.uk)



اگر در فهمیدن این نشریه مشکلی دارید لطفاً به میز پذیرش  
در آدرس قید شده در زیر مراجعه نمایید تا ترتیب ترجمه  
تلفنی برایتان فراهم آورده شود:

ਜੇਕਰ ਤੁਹਾਨੂੰ ਇਸ ਪਰਚੇ ਨੂੰ ਸਮਝਣ ਵਿਚ ਮੁਸ਼ਕਲ ਪੇਸ਼ ਆਉਂਦੀ ਹੈ ਤਾਂ ਹੇਠਾਂ  
ਦਿੱਤੇ ਗਏ ਪਤੇ ਉੱਪਰ ਰਿਸੈਪਸ਼ਨ 'ਤੇ ਆਓ ਜਿੱਥੇ ਅਸੀਂ ਟੈਲੀਫੋਨ ਤੇ ਗੱਲਬਾਤ  
ਕਰਨ ਲਈ ਇੰਟਰਪ੍ਰਿਟਰ ਦਾ ਪ੍ਰਬੰਧ ਕਰ ਸਕਦੇ ਹਾਂ।

إذا كانت لديك صعوبة في فهم هذا المنشور، فنرجو زيارة الإستقبال في  
العنوان المعطى أدناه حيث بإمكاننا أن نرتب لخدمة ترجمة شفوية  
هاتفية.